

LL 1095 LL 1096

LL 1138 LL 1137

REF. PLAT BY JOHNNY R. KNIGHT, DATED 8/3/89

Plat by this firm dated 7/17/95

SURVEY FOR:

MICHAEL HENDRIX

BEING IN LAND LOT 1138 17th DISTRICT
3rd SECTION BARTOW COUNTY, GEORGIA.

DECEMBER 11, 1995 SCALE 1"=150'

75' 0' 75' 150' 225'



This is to certify that the property shown has a portion that does lie within the flood plain area as mapped by F.I.A. for the Dept. of Hyd.

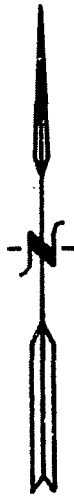
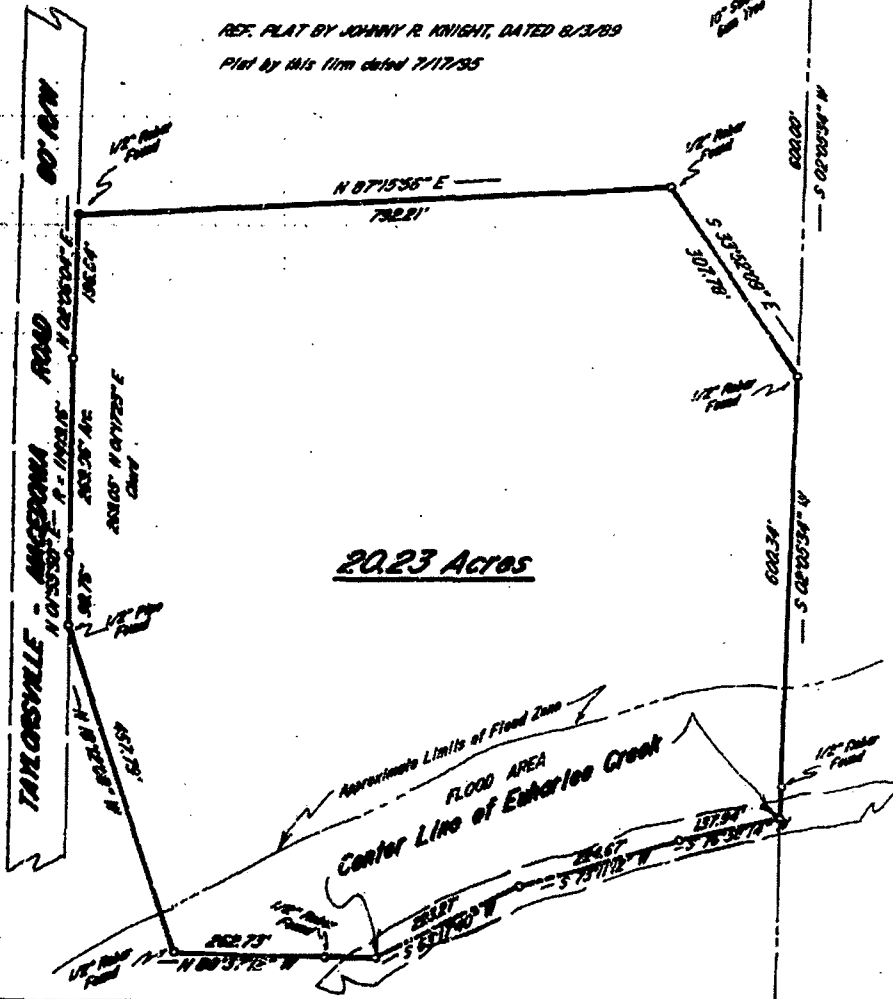
EQUIPMENT USED FOR MEASUREMENT:
Angle: Topcon 6TS-30
Linear: Topcon 6TS-30

The field data upon which this plat is based has a closure precision of more than one foot in 10,000 feet and an angular error of less than 10 seconds per angle point and was adjusted using the Compass Rule.

IN MY OPINION THIS PLAT IS A CORRECT REPRESENTATION OF THE LAND PLATED AND HAS BEEN PREPARED IN CONFORMANCE WITH THE HIGHEST STANDARDS AND REQUIREMENTS OF LAW.

Larry H. Rogers
Larry H. Rogers Reg. Land Surveyor # 2342

ASSOCIATED SURVEYORS, INC.
LAND AND ENGINEERS SURVEYS
PHONE 770-634-3717



Rec# 95-003543
GEORGIA BARTOW COUNTY
CLERK'S OFFICE SUPERIOR COURT

Filed for record this 19 day of
Dec 1995 at 9:14 o'clock AM
Book 1195 page 20 day of
Dec 1995
TISH JOHNSON, Clerk